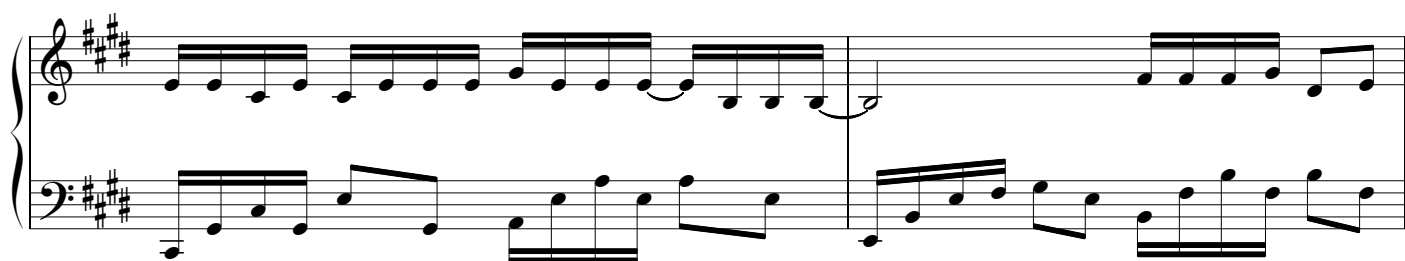
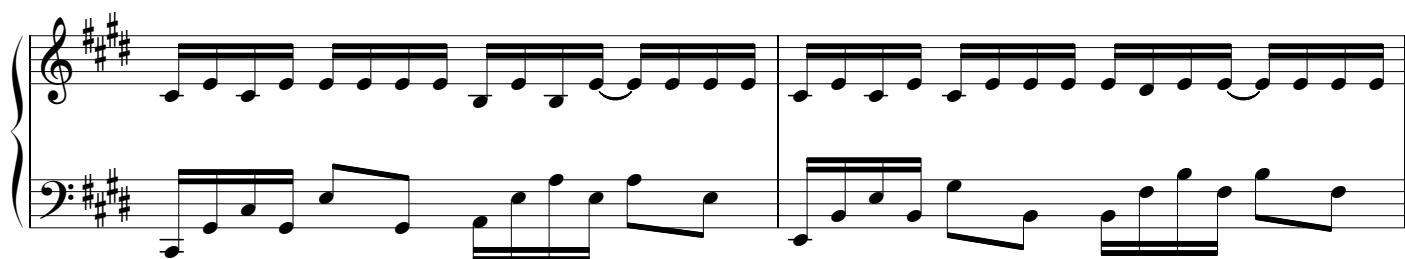
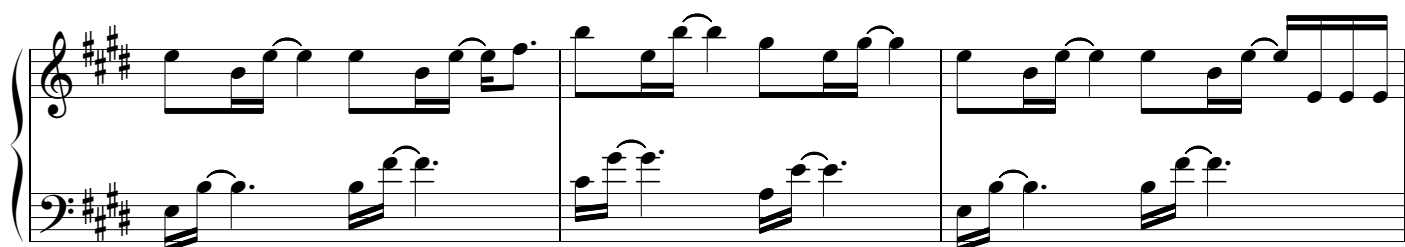
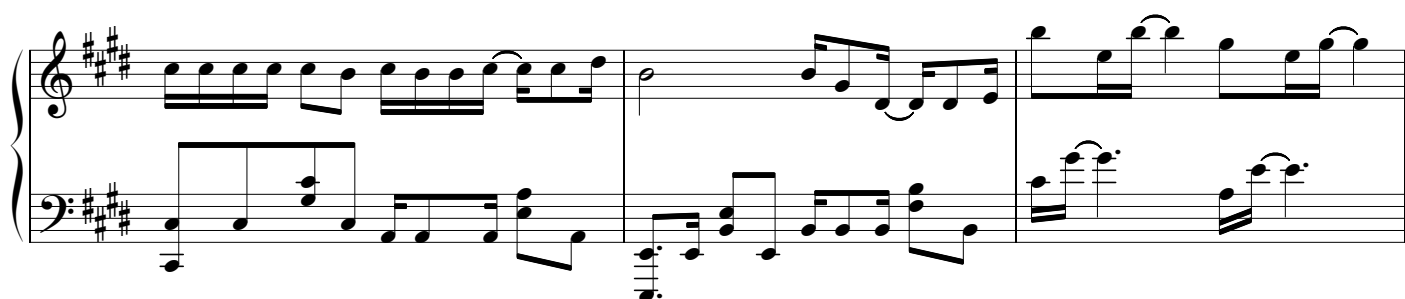
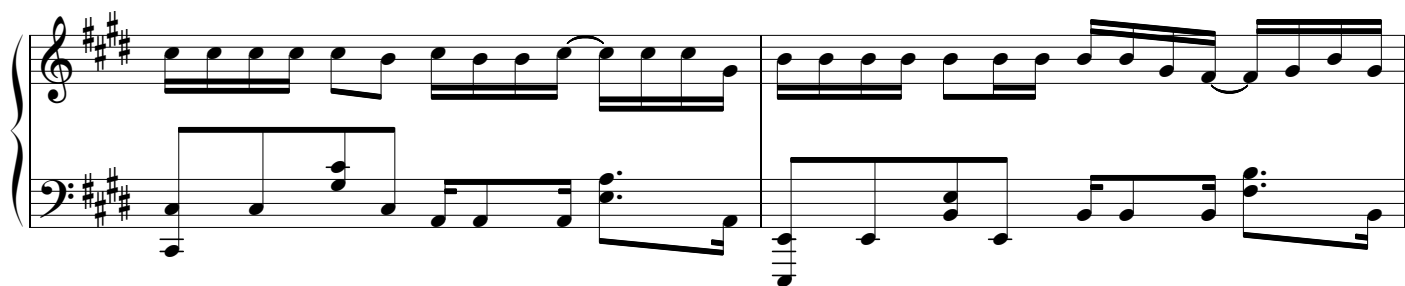
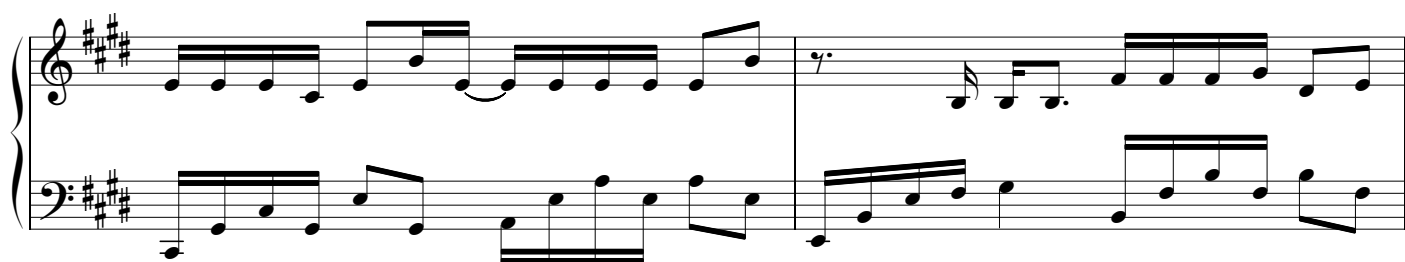


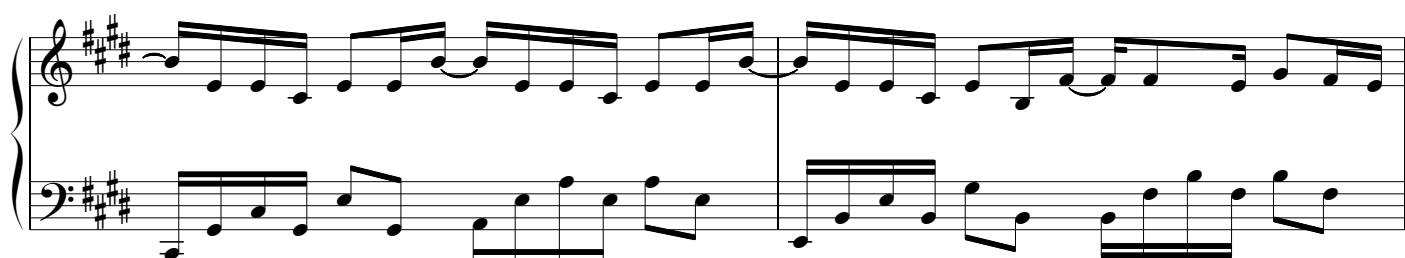
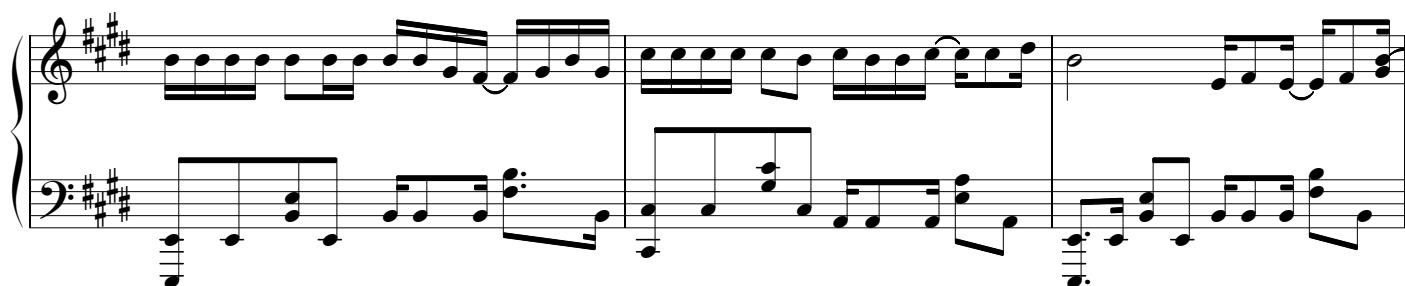
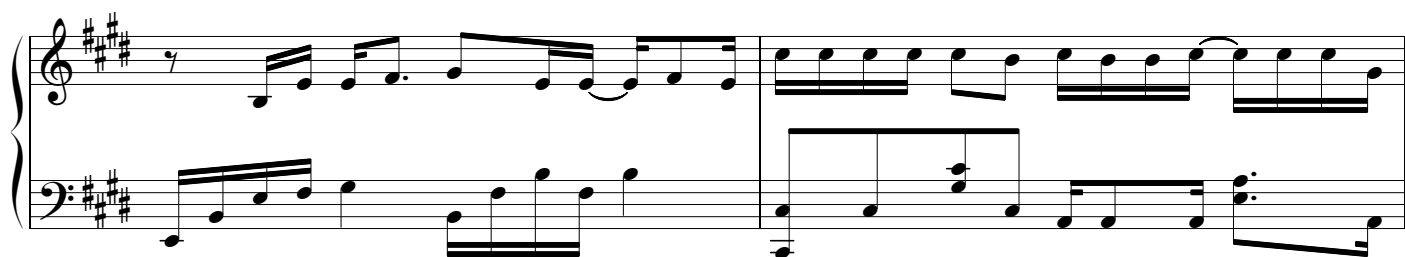
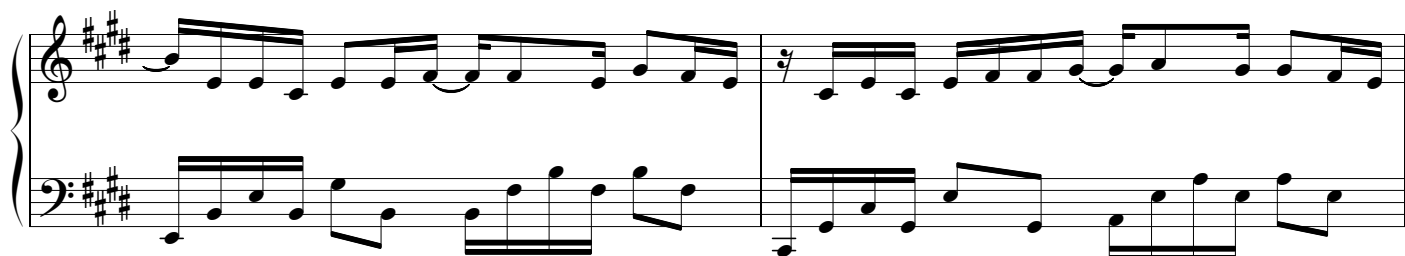
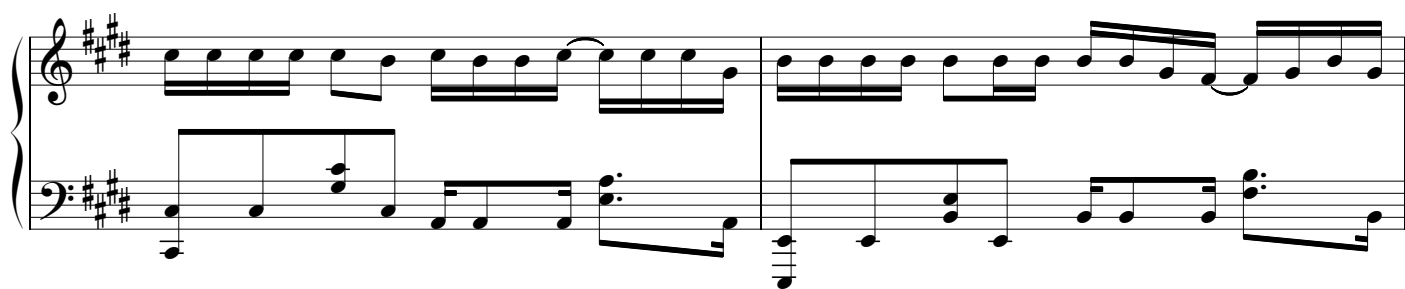
# 清空, 王忻辰 & 蘇星婕

作詞：安蘇羽  
作曲：安蘇羽

Piano

The piano score is written for a single instrument. It begins with a treble and bass clef, a key signature of one sharp (F#), and a time signature of 4/4. A tempo marking of quarter note = 68 is present. The score is divided into six systems, each containing two staves. The melody in the right hand is composed of eighth and quarter notes, often beamed together. The left hand provides a harmonic foundation with a mix of eighth, quarter, and half notes. The overall mood is serene and contemplative, reflecting the title 'Qing Kong' (Clear Sky).





The image displays three systems of piano music, each consisting of a treble and bass staff. The key signature is A major (three sharps: F#, C#, G#) and the time signature is 2/4. The first system shows a melodic line in the treble staff with eighth and sixteenth notes, and a bass line with a steady eighth-note accompaniment. The second system continues the melodic development with more complex rhythmic patterns, including triplets and slurs. The third system concludes the piece with a final melodic flourish in the treble and a corresponding bass line, ending with a double bar line.